



DSU III TDM

4-Port DDS DSU/CSU Time Division Multiplexer

Product Features

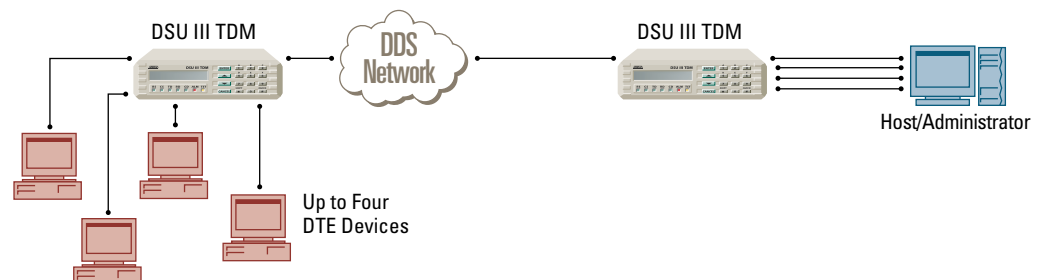
- 56/64 kbps leased line point-to-point DDS operation
- Four independent DTE ports
- Synchronous or asynchronous operation
- Automatic remote configuration
- Extensive test features
- Single/multi-port operation
- Extensive status monitoring
- LCD display
- Full numeric keypad
- Standard Five-year warranty

The ADTRAN DSU III TDM, a full-featured four port digital data service (DDS) data service unit/channel service unit (DSU/CSU), connects up to four DTE devices to a single 56/64 kbps DDS circuit. One communications link is shared by up to four DTE devices through time division multiplexing (TDM). The DSU III TDM allows each DTE to use the path exclusively at regular intervals.

The DSU III TDM provides four EIA-232 DTE interfaces. An optional V.35 adapter is available for applications requiring a physical V.35 DTE connector. Port 1 supports data rates up to 64 kbps while ports 2-4 support data rates up to 38.4 kbps. The DSU III TDM

may be operated as a single-port DSU/CSU at data rates up to 64 kbps or as a multi-port DSU/CSU with an aggregate data rate of up to 60 kbps over a 64 kbps DDS circuit or 52.8 kbps over a 56 kbps circuit.

Other major features of the DSU III TDM include synchronous or asynchronous operation on all ports, automatic remote configuration, and extensive test functions for testing loop and DTE interfaces.





ADTRAN, Inc.

Attn: Enterprise Networks
901 Explorer Boulevard
Huntsville, AL 35806

P.O. Box 140000
Huntsville, AL 35814-4000

256 963-8000 voice
256 963-8699 fax
256 963-8200 fax back

General Information

800 9ADTRAN
info@adtran.com
www.adtran.com

Pre-Sales

Technical Support

800 615-1176 toll-free
application.engineer@adtran.com
www.adtran.com/support

Where to Buy

877 280-8416 toll-free
channel.sales@adtran.com
www.adtran.com/where2buy

Post-Sales

Technical Support

888 423-8726
support@adtran.com
www.adtran.com/support

ACES Installation & Maintenance Service

888 874-ACES
aces@adtran.com
www.adtran.com/support

International Inquiries

256 963 8000 voice
256 963-6300 fax
international@adtran.com
www.adtran.com/international

For the regional office nearest you, visit:

www.adtran.com/where2buy

DSU III TDM

4-Port DDS DSU/CSU Time Division Multiplexer

Product Specifications

Operating Mode

- T Dedicated DDS

Network Data Rates

- 56/64 kbps

DTE Rates

Port 1

- 2.4 - 64 kbps sync
- 2.4 - 57.6 kbps async

Ports 2, 3, 4

- 2.4 - 38.4 kbps sync/async

DTE Interface

- Four EIA-232 DTE connectors
- V.35 adapters available

Clocking

- Normal DDS or private networking
- Private network master (internal)
- Private network master (external)

Line Requirements

- Loop transmission parameters as defined in:
AT&T Pub. 62310: Dedicated DDS

Line Interface

- RJ-48S, 4-wire, full duplex

Receiver Sensitivity

- -45 dB at all rates

Diagnostics

- **Network:** DSU/CSU loopbacks
- **User:** Local DTE and loop, V.54
- **Test patterns:** 2047, 511, DDS stress patterns 1-4

Agency Approvals

- FCC Part 15, Class A
- FCC Part 68
- Industry Canada CS03
- UL and CUL

Environment

- **Operating:** 0° to 50°C (32° to 122°F)
- **Storage:** -20° to 70°C (-4° to 158°F)
- **Relative Humidity:** Up to 95%, non-condensing

Physical Dimensions

- **Dimensions:** 2.25" H, 8.75" W, 10.25" D
- **Weight:** 3 lbs

Power

- 115 vAC, 60 Hz, 8 watts

Product Includes

- 8-pin to 8-pin modular cable
- User manual

Ordering Information

| Equipment | Part # |
|-------------------------------|-----------|
| DSU III TDM | 1200063L1 |
| V.35 adapter (male to male) | 1200063L6 |
| V.35 adapter (male to female) | 1200063L8 |



I.S. EN ISO 9001
ADTRAN is a
ISO 9001 registered company.



TL 9000
ADTRAN is a
TL 9000 registered company.

Printed in the U.S.A.
61200063L1-8G July 2002
©2002 ADTRAN, Inc. All rights reserved.

Specifications subject to change without notice. ADTRAN is a trademark of ADTRAN, Inc. All registered trademarks and trademarks mentioned in this publication are the property of their respective owners.